

Intensive Outpatient Program

Hopeful Help

Monday, Wednesday, Friday

10 AM to 2 PM

Lunch and Transportation
are included

For Referrals or questions,
call today, 601-587-1292

To Fax a referral: 601-587-1181

Email:

Kathryn.langston@smrmc.com

Intensive Outpatient Program

a program of

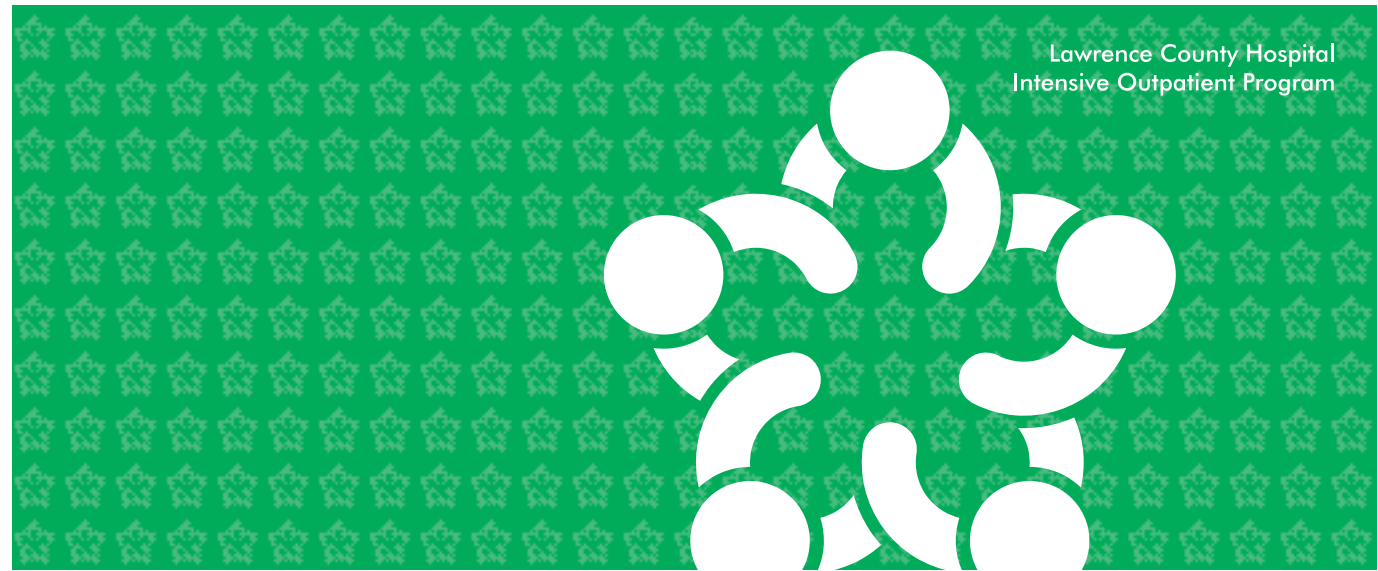
Lawrence County Hospital

1065 Broad Street

Monticello, MS 39654

Phone: 601-587-1292

Fax: 601-587-1181



Lawrence County Hospital
Intensive Outpatient Program

Lawrence County Hospital

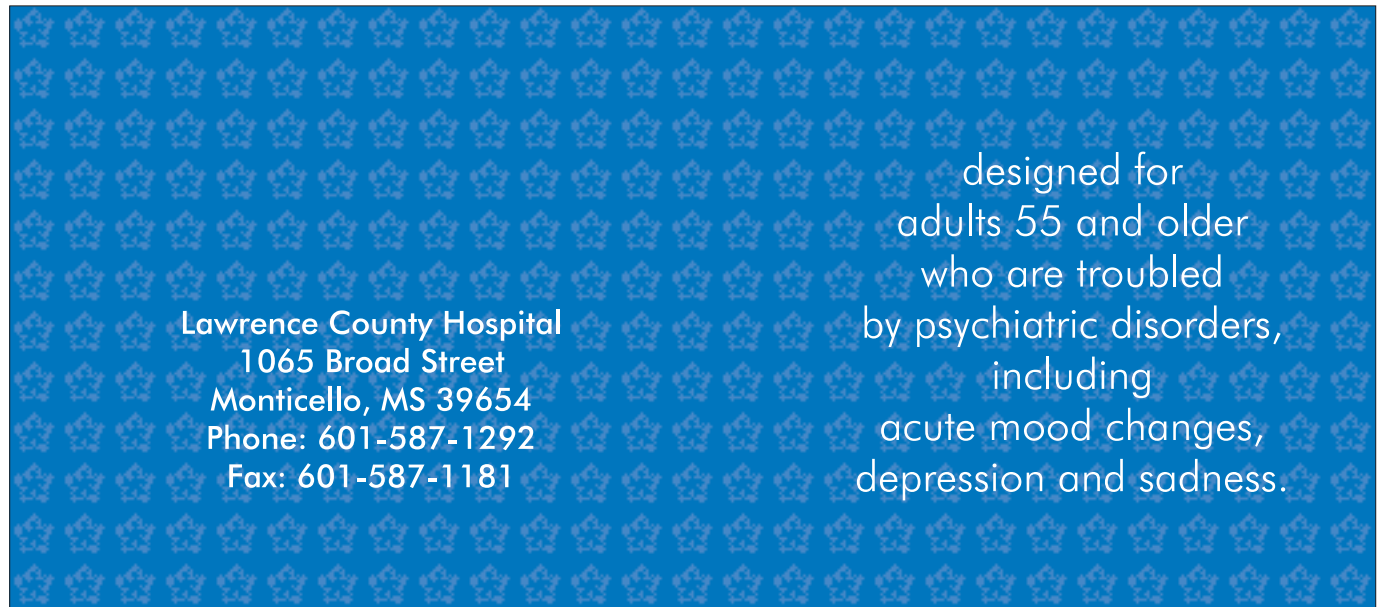


Intensive Outpatient Program

Lawrence County Hospital

Hopeful Help

Intensive Outpatient Program



Lawrence County Hospital

1065 Broad Street

Monticello, MS 39654

Phone: 601-587-1292

Fax: 601-587-1181

designed for
adults 55 and older
who are troubled
by psychiatric disorders,
including
acute mood changes,
depression and sadness.

Our Intensive Outpatient Program provides therapies clearly focused on and structured around the patient's presenting problems. Each patient is assigned a treatment team consisting of a psychiatrist, primary counselor, social worker, a mental health assessment specialist and the program director, who is a registered nurse.

Our Program offers a focused experience where patients live at home and come to the program 3 days a week for 4 hours a day. It is a recovery program where patients are able to process their experiences in a safe and supportive group setting.

The Intensive Outpatient Program is designed for adults 55 and older who show some or all of the following signs and symptoms:

- **Withdrawal from family and friends**
- **Depression**
- **Sadness**
- **Personality changes**
- **Fears and anxieties**
- **Changes in eating habits**
- **Changes in sleeping patterns**
- **Confusion**
- **Unable to concentrate**
- **Grieving**
- **Inability to cope with daily life**
- **Unusual behavior or thinking**
- **Mental illness**
- **Unable to process medication schedule**

What we offer:

- Confidential assessment of treatment needs
- A team approach actively involving family if desired
- Individualized treatment plan for 8 weeks
- Individual, group and family therapy
- Medication Management
- Psychiatric evaluation
- On-site Licensed staff
- Treatment for mental, emotional, or behavioral problems
- Lunch 3 days a week
- Transportation to and from the Program

Referrals may be made by family members, physicians, nurses, clergy, and the patients themselves.

For Referrals or questions, call today, 601-587-1292
